

# Windows 7

If you're using Windows 7, the following steps will guide you through setting up your PC for accessing teeone. All files required for installation can be found at

<http://support.teeone.net/support/downloads.asp>

Click on "teeone connector 12/08" and you will see a dialog box asking if you want to Open or Save this file - Choose Save and place the file on your Desktop.

After downloading this file, close your browser and then double-click on the file (teeone.rdp) you just saved on your Desktop.

You should see a box asking for the Computer.



In the upper left hand corner, click on the satellite icon – then Select About.



This should give you the build number.

You want Shell Version 6.1 (Build Number 6001) or higher to use all the features available.

Click OK.

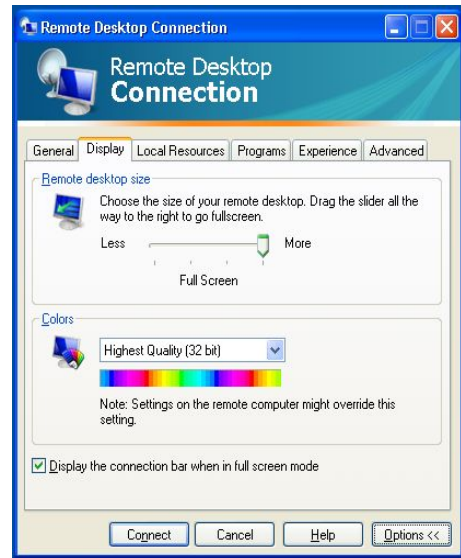


Click the Options button.



Click the Display tab.

Verify the settings for color show as "True Color (32 bit)."



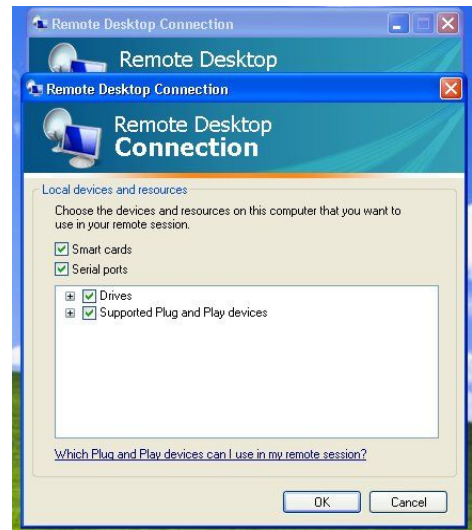
Click the Local Resources tab.

Verify Printers and Clipboard boxes are checked.



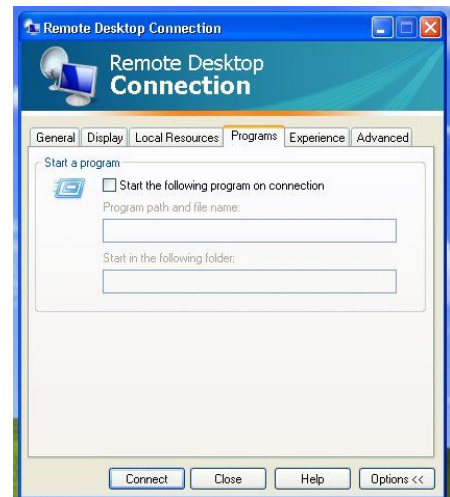
Click More - Verify Smart cars, Serial ports, Drives and Supported Plug and Play devices are checked.

Click OK.



Click the Programs tab.

The fields on this tab should be empty.



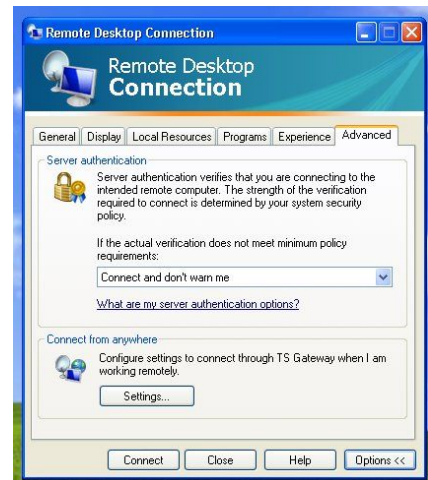
Click on the Experience tab.

Be sure Reconnect if connection is dropped has been checked.



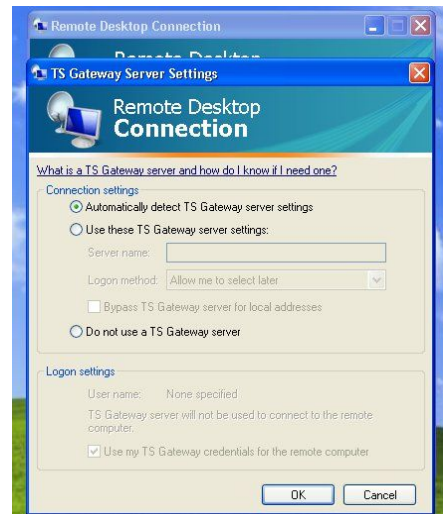
Click on the Advanced tab.

Be sure the drop down choice is Connect and Don't warn me.



Click the Settings button.

Select Do not use a TS Gateway server.

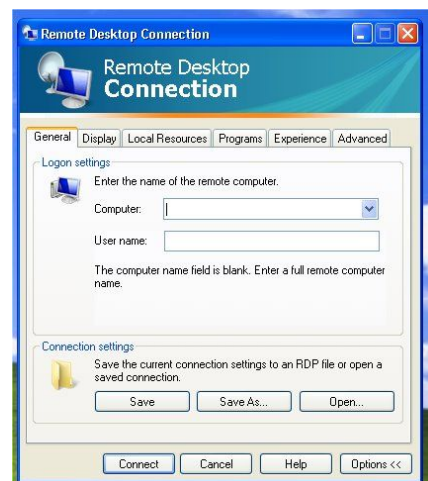


Go back to the General tab.

Enter the computer name and user name from page 1. Your office manager should have this information or contact Tech Support at 904.425.0183 option 1.

Click the Save As button and choose to save this new information. You want to Replace the existing file so the information will be available next time.

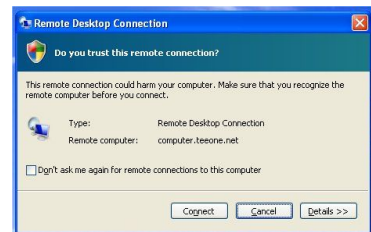
After saving, click the Cancel button to close to program.



# Logging On

Double-click the teone icon. If you get prompted for a computer name, then you missed a step. STOP! Redo the instructions for your operating system again.

If you see a security warning: Click on "Don't ask me again..." and click Continue or Connect.



The program connects to the server and a logon box is displayed. The user name should be filled in but the password should be empty. Even if you entered the password and saved it, the server will always ask for it. This is a security precaution and cannot be changed. Enter the password and click OK to log on to the server.



Once logged on, you will have a Start button to click on. From there, you can run the programs that are available on the server.

When you are finished, don't click the X to close the window. Be sure to click the Start button and choose Log off. Users who click the on X have reported occasional data corruption issues.