

Apple MAC OS X

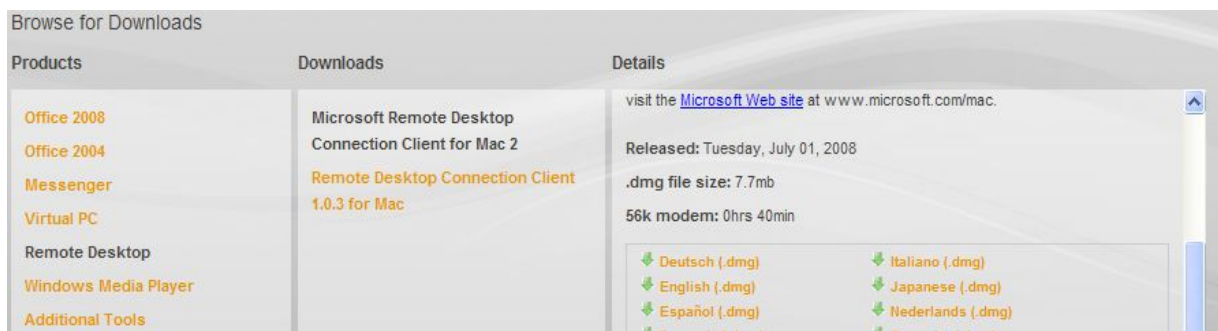
Apple ships a basic Remote Desktop Connection with the operating system, but to get all the features available today, you need to update to the latest version. Remote Desktop Connection is published by Microsoft. You will find the latest version on Microsoft's Mac download website:

<http://www.microsoft.com/mac/downloads.mspx>

In the "Browse for Downloads" square on the site, click on Remote Desktop under Products. This shows the version choices available in the Downloads square. Click on Microsoft Remote Desktop Connection Client for Mac 2.

Note: Microsoft has released the Microsoft Remote Desktop Connection Client for Mac 2.0.1 – This version is compatible with teene.

This shows the download details in the Details square. Scroll down and click the link for the language you prefer – probably "English (dmg)."



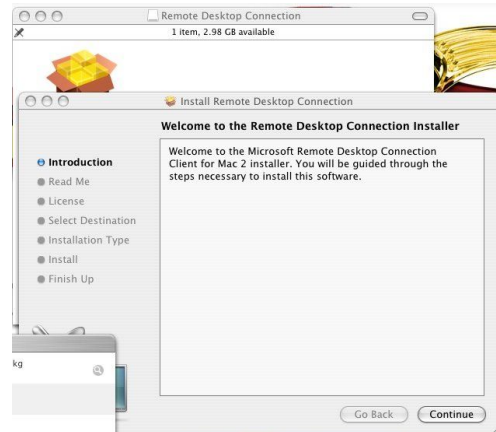
You may see a warning message. If so, click Continue.

This immediately begins the download to your Mac.



Once the download is complete the auto-installer puts a temporary icon on the desktop and opens a window for the installer to put all the necessary files on your computer.

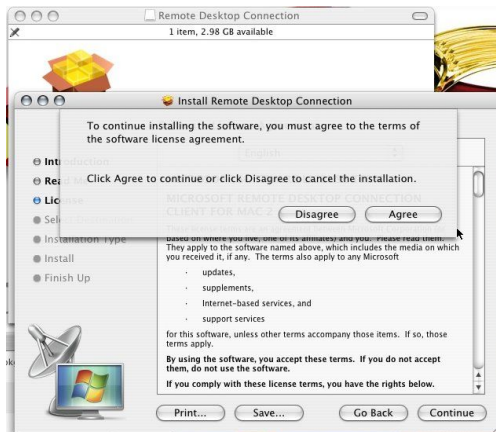
Click Continue.



On the Important Information screen, click Continue.



After reviewing the license agreement, click Agree.



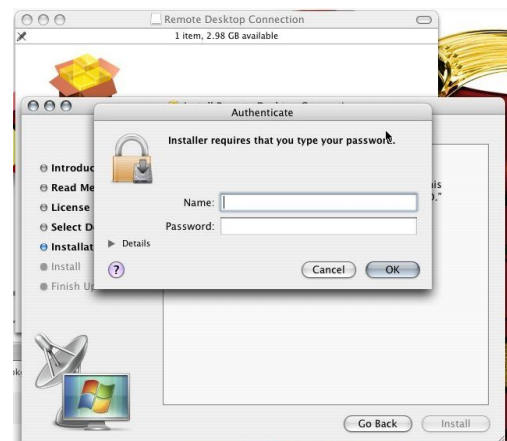
Select the destination to install to and click Continue.



Use "Easy Install" and click Install.



Enter the credentials for your Mac.



Click OK

Once the program has been installed, click Close.



Open the hard drive icon, then open the Applications folder and scroll down to "Remote Desktop Connection.app".

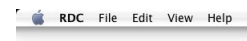


Double click this icon to start Remote Desktop Connection.

Enter the Computer name from page 1. Your office manager should have this information or contact Tech Support at 904.425.0183 option 1.



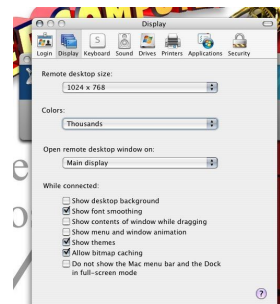
Go to drop-down menu under "RDC" in the upper left corner of the menu bar and select "preferences."



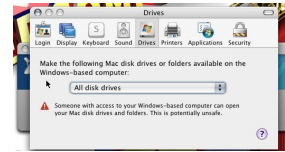
On the Login page, enter the User name from page 1 and leave the Password and Domain fields blank. Your office manager should have this information or contact Tech Support at 904.425.0183 option 1.



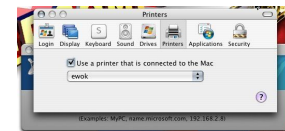
The Display page contains settings that help give you the best visual experience. Those shown are the recommended settings. You can experiment with these to your satisfaction. Note: not all settings are supported by the server to which you are connecting.



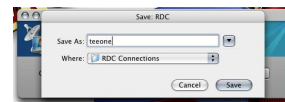
The Drives page needs to be set to All disk drives so you can easily transfer files between the Mac and the server.



The Printers page controls whether and which of your printers you can use from the server.



Go to drop-down menu under "File" in the upper left corner of the menu bar and select "Save." Name it teeone and click Save.



Now that the settings are correct, click Cancel to close the dialog box.

Logging On

Double-click the teeone icon. If you get prompted for a computer name, then you missed a step. STOP! Redo the instructions for your operating system again.

If you see a security warning: Click on "Don't ask me again..." and click Continue or Connect.



The program connects to the server and a logon box is displayed. The user name should be filled in but the password should be empty. Even if you entered the password and saved it, the server will always ask for it. This is a security precaution and cannot be changed. Enter the password and click OK to log on to the server.



Once logged on, you will have a Start button to click on. From there, you can run the programs that are available on the server.

When you are finished, don't click the X to close the window. Be sure to click the Start button and choose Log off. Users who click the on X have reported occasional data corruption issues.